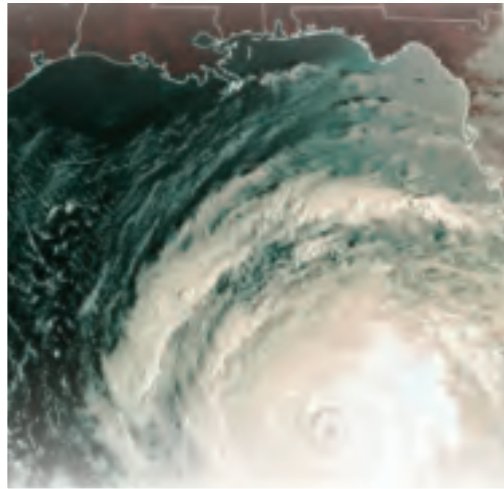


# SafeHarbor<sup>®</sup>



Vinyl Impact  
Windows & Doors



For Replacement Applications



## *Make Your Home A SafeHarbor®*

SafeHarbor® Vinyl Impact windows and sliding glass doors are engineered to protect your home against dangerous weather, including hurricane force winds. Reducing the possibility of flying debris penetrating the window results in reducing the possibility of structural and water damage or even total destruction.

SafeHarbor products are designed to look like traditional windows and doors, but they are constructed of impact-resistant safety glass embedded in heavy duty, reinforced frames.

The Design Pressure ratings of SafeHarbor® windows and doors meet coastal wind and hurricane debris code requirements.

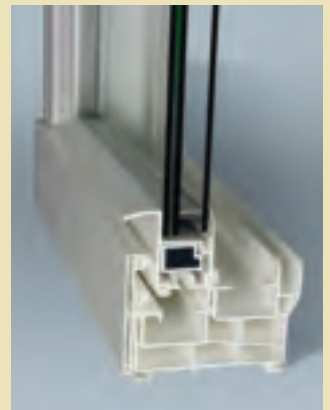
SafeHarbor® Vinyl Impact windows and sliding glass doors provide an added measure of safety to help protect your homes.

### Impact-Resistant Glass Construction

SafeHarbor windows feature laminated safety glass combined with a thermally efficient insulating glass system.

The exterior lite consists of a 1/8" thick annealed double strength glass panel. The interior lite is constructed of two, 1/8" thick annealed glass panels laminated with an interlayer membrane that becomes transparent during the laminating process and forms a 5/16" thick panel.

This unique laminated glass system combined with a second insulating lite creates an impact-resistant barrier and delivers outstanding thermal efficiency.



## Series 230 Single Hung or Horizontal Slider Windows

Single hung windows have a fixed top sash and a bottom sash that operates vertically. Series 230 Single hung windows look just like any other window, but their laminated glass construction combined with the SafeHarbor® insulated glass system reduces noise pollution while protecting your home from dangerous flying debris.

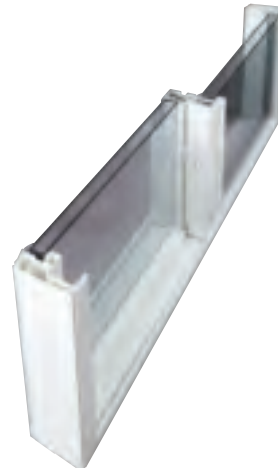
Horizontal sliding windows are the perfect choice for large areas, or where a horizontal opening is preferred. They glide easily, yet meet all AAMA/ American Architectural Manufacturers Association specifications for hurricane impact and cycle testing standards.



- Vinyl impact construction meets AAMA hurricane debris test protocols
- Laminated glass system with .090" interlayer provides impact resistance and reduces outdoor sound transmission
- 7/8" insulated glass panel with warm edge spacer system provides energy saving thermal performance
- Double, reinforced interlocks provide exceptional structural integrity, strength and security
- Multi-chambered frame assembly improves thermal performance and helps enhance sound absorbency
- Aluminum reinforced stiles and bottom rail for enhanced structural performance
- \*Half screen is standard
- White standard, almond optional
- Cam-lock and keeper help provide a weather-tight seal and added security
- Heavy-duty construction is qualified for use in a wide variety of construction applications
- Precision-mitered, fusion welded corners for advanced structural integrity
- Concealed drainage system keeps dust out and water drainage clear

### Options:

- Low-E glass
- Low-E glass with Argon gas
- Flat and contoured grids available



### Single Hung

- Certified DP55
- Block and tackle balance system on sizes up to 44" x 72" ensures easy sash movement
- Heavy-duty spiral balance system designed specifically for larger glass is standard on sizes over 44" x 72" (Maximum size: 53" x 77")
- Available in complementary horizontal slider, picture window and special shapes

### Horizontal Slider

- Certified DP55 (Maximum size: 72" x 48")
- Dual brass rollers glide over raised track for smooth, effortless operation
- Available in complementary single hung, picture window and special shapes

\* Screens are not meant to restrain a child from falling through an open window.



- Vinyl impact construction meets AAMA hurricane debris test protocols
- Laminated glass system with .090" interlayer provides impact resistance and reduces outdoor sound transmission
- 3-/4" insulated glass panel with warm edge spacer system provides energy saving thermal performance
- Certified DP55 (Maximum size: 36" x 60")
- Sash cranks open for maximum ventilation, comfort and easy cleaning
- Heavy-duty coastal hardware with single-lever, multi-point lock for increased security
- Folding handle operates smoothly and folds into assembly so it will not interfere with window treatments
- Multi-chambered frame assembly improves thermal performance and helps enhance sound absorbency
- \*Screen is standard
- White standard, almond optional
- Heavy-duty construction is qualified for use in a wide variety of construction applications
- Precision-mitered, fusion welded corners for advanced structural integrity
- Concealed drainage system keeps dust out and water drainage clear
- Available in complementary picture window and special shapes

Options:

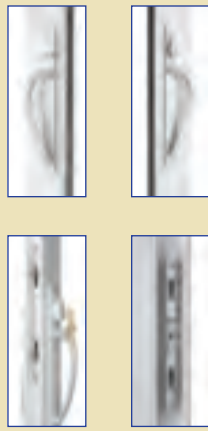
- Low-E glass
- Low-E glass with Argon gas
- Flat and contoured grids available

\* Screens are not meant to restrain a child from falling through an open window.

## Series 270 Casement Windows

Series 270 casement windows feature crank-out sashes that provide great ventilation and unobstructed vertical viewing. They make perfect alternatives for installing over a kitchen sink to allow easy opening of the sash. Plus, because of the extreme force and time it takes to penetrate these windows, SafeHarbor® Windows are a deterrent to theft, burglary and unwelcome intrusion.





## Series 352 Sliding Patio Door

These high-performance vinyl impact sliding glass doors feature a laminated, tempered glass construction that screens out ultraviolet light, reduces outside noise pollution and reduces solar heat gain while protecting your home from flying debris.

- Vinyl impact construction meets AAMA hurricane debris test protocols
  - Laminated glass system with .090" interlayer provides impact resistance and reduces outdoor sound transmission
  - 1" insulated glass panels with warm edge spacer system provides energy saving thermal performance
  - Certified DP60 in select sizes (Maximum size: 8'0" x 8'0")
  - Multi-point locking system improves security
  - Operable, galvanized steel reinforced panels feature heavy-duty, tandem ball bearing rollers with 2" diameter wheels for durable, easy operation
  - Multi-chambered frame assembly improves thermal performance and helps enhance sound absorbency
  - Dual weather sealed interlock blocks air and water infiltration
  - Integral, pre-punched installation fin targets proper screw location for secure installation (removable for replacement applications)
  - \*Screen is standard
  - White standard, almond optional
  - Precision-mitered, fusion welded frame and panel corners for enhanced structural integrity
  - Concealed drainage system keeps dust out and water drainage clear
- Options:
- Low-E glass
  - Low-E glass with Argon gas
  - Flat and contoured grids available

## Upgrade Your SafeHarbor® Vinyl Impact Windows & Doors with Energy Efficient Low-E Glass

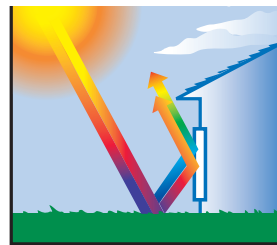
### The Warm-Edge Advantage – Standard

Specially insulated spacers between the glass panes are designed to flex with the glass in hot or cold temperatures to resist sealant failure. The insulated spacers also help keep the edges of the glass warmer, dramatically reducing condensation while keeping cold air out and warm air in.

### Optional Energy Saving Low-E Glass Technology

Low-E glass is coated with a virtually invisible layer of silver that reflects radiant solar energy while permitting visible light to pass through the glass. In cold, winter climates the Low-E glass helps keep rooms warmer by reflecting heat back into the home while letting warm, solar rays in. In hot, summer temperatures the Low-E glass lets visible light pass while blocking infrared and ultraviolet radiant solar energy. So your rooms stay cooler and you save on precious energy costs. An added bonus of Low-E glass, blocking radiant solar energy, also helps protect room furnishings from fading.

### Low-E Glass



*During the summer, it reflects the sun's heat energy away from your house for cooler inside temperatures.*



*During the winter, this glass lets in natural light and keeps heat energy inside your house.*

This gives you better insulation, less condensation and greater energy savings all year.

### Kids Can't Fly

*Screens are not designed to restrain a child from falling through an open window. Please take proper precautions.*

We are proud to promote energy efficient products in conjunction with the Energy Star® for Windows program.



# SafeHarbor®

[www.safeharborwindows.com](http://www.safeharborwindows.com)

Distributed by: